

### FOUNDATION DESIGN TABLE

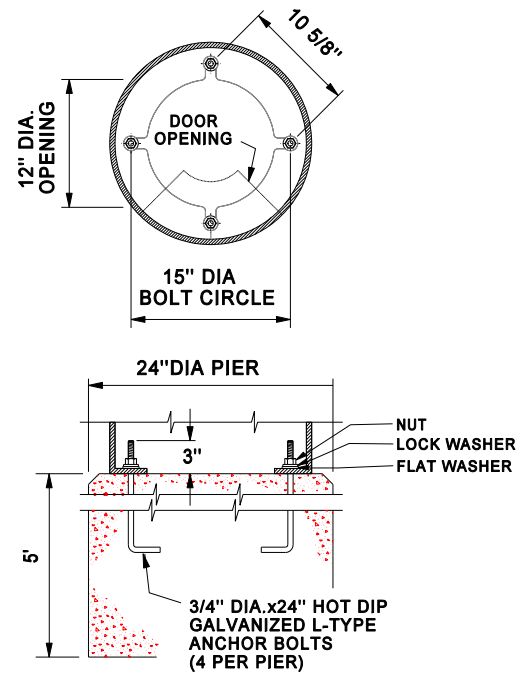
FND. TYPE	DRILLED SHAFT DIA	REINFORCING STEEL		DRILLED SHAFT LENGTH (FEET)	GROUND ROD SIZE	ANCHOR BOLT DESIGN					DIM. "CC" CLEARANCE DIA. FOR LOCATION OF CONDUIT	FOR POLE TYPE
		VERT BARS	SPIRAL & PITCH			ANCHOR BOLT DIA	ANCHOR BOLT TOTAL LENGTH	BOLT CIR DIA	ANCHOR TYPE No.	DISTANCE ACROSS BOLTS DIM. "BB"		
1	24"	4-#5	18"x #3 at 6"	6	5/8" x 8'	1"	40"	10"	47	7 1/16"	6 1/2"	11
2	24"	4-#5	18"x #3 at 6"	6	5/8" x 8'	1"	40"	11"	47	7 3/4"	7"	8 & D30-6
3	24"	4-#5	18"x #3 at 6"	8	5/8" x 8'	1"	40"	11 1/2"	47	8 1/8"	7 1/2"	18
4	24"	4-#5	18"x #3 at 6"	6	5/8" x 8'	1"	40"	10 1/2"	47	7 7/16"	6 1/2"	D25-6
5	30"	6-#5	24"x #3 at 6"	8	5/8" x 8'	1 1/4"	54"	13"	51	9 3/16"	8 1/2"	D40-6T, *D40-9
6	30"	6-#5	24"x #3 at 6"	8	5/8" x 8'	1 1/4"	54"	13 1/2"	51	9 9/16"	9 1/2"	18A
7	24"	4-#5	18"x #3 at 6"	5	5/8" x 8'	3/4"	24"	15"	N/A	10 5/8"	10"	**A11/20 & **A14/20
8	30"	6-#5	24"x #3 at 6"	8	5/8" x 8'	1 1/2"	60"	15"	49	10 5/8"	10"	19, 41
9	30"	6-#5	24"x #3 at 6"	8	5/8" x 8'	1 1/4"	54"	17 1/4"	51	12"	10"	41B

**NOTES :**

- IF ROCK IS ENCOUNTERED, THE DRILL SHAFT SHALL EXTEND A MINIMUM OF TWO DIAMETERS INTO SOLID ROCK AND HAVE A MINIMUM OF 6 FEET SHAFT DEPTH FOR FND. TYPE 3, 5, 6 AND 8.
- ANCHOR BOLTS SHALL BE GALVANIZED THE FULL LENGTH.
- SUPPLY 2 NUTS, 2 WASHERS & 1 LOCK WASHER WITH EACH ANCHOR BOLT.
- ANTIQUE STYLE ANCHOR BOLT TO BE SUPPLIED WITH 1 NUT, 1 FLAT WASHER, & 1 LOCKWASHER.

**ANCHOR BOLT INSTALLATION PROCEDURE :**

ANCHOR BOLT THREADS SHALL BE TAPED PRIOR TO POURING CONCRETE. THREADS OF ANCHOR BOLTS SHALL BE COATED WITH PIPE JOINT COMPOUND PRIOR TO INSTALLATION OF UPPER NUTS WHEN ERECTING POLE. AFTER POLE IS PLUMBED AND IN PERMANENT ALIGNMENT, THE EXPOSED THREADS OF PAINTED BOLTS SHALL BE CLEANED AND AN ADDITIONAL COATING OF ZINC-RICH PAINT APPLIED TO SEAL THE BOLT THREAD-NUT JOINT.

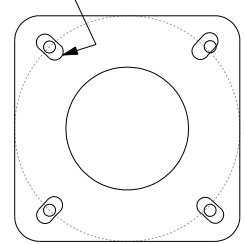


NOTE: CONDUIT & GROUND ROD NOT SHOWN FOR CLAIRITY.

SEE FOUNDATION DESIGN TABLE

**USE TYPE 7 FOUNDATION FOR ANTIQUE STYLE STREET LIGHT POLE**

BASE PLATE TO BE SLOTTED AND SIZED TO ACCEPT REQUIRED ANCHOR BOLTS.

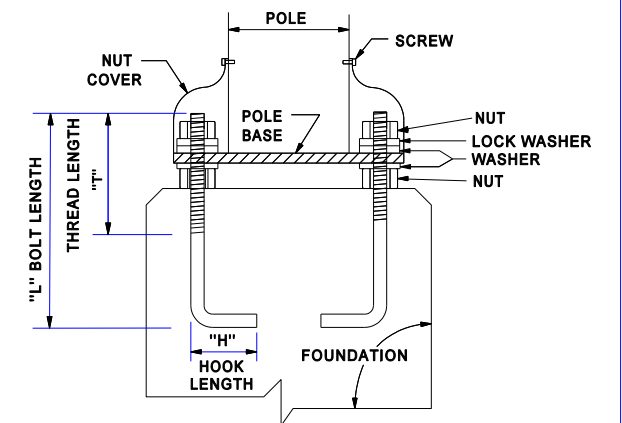


**POLE BASE PLATE**

TYPE NO.	BOLT DIA. (IN.)	LENGTH "L" (IN.)	HOOK "H" (IN.)	THREAD "T" (IN.)	HEIGHT ABOVE FOUNDATION
47	1	36	4	6	4 1/2"
49	1 1/2"	54	6	9	7"
51	1 1/4"	48	6	9	5 1/4"
ANTIQUE	3/4"	24	3	3	3

**ANCHOR BOLT DETAIL**

NOTE: ANCHOR BOLTS SHALL BE GALVANIZED THE FULL LENGTH.



REV. 1-28-08 DETAIL CHANGES BY JOE RADENZ.  
 REV. 2-01-05 FOR POLE GROUNDING DETAIL @ FOUNDATION BY JOE RADENZ  
 REV. 2-13-04 FOR POLE BASE AND ANCHOR BOLTS BY JOE RADENZ

DEPT. OF TRANSPORTATION AND PUBLIC WORKS  
 TRAFFIC SERVICES DIVISION



**STREET LUMINAIRE POLE FOUNDATION DETAILS**

DESIGNED BY: JOE RADENZ	DATE: 9-08-03	CHECKED BY: J.T.R.,R.R.V.	DATE: 9-17-03	LOC. No.
DRAWN BY: JOE RADENZ	DATE: 9-08-03	APPROVED BY: RONNIE VARNELL	DATE: 9-17-03	
SCALE: N.T.S.	DRAWING No.: 3256	SHEET No. 2	OF 5	



THE SEAL APPEARING ON THIS DOCUMENT WAS AUTHORIZED BY RONNIE R. VARNELL, P.E. 52203 ON 1-31-08