

MEP Residential Plan Review



March 24, 2009

Why?

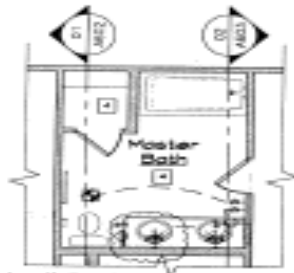
- As a service to the building community- attempt to preempt field issues such as:
 - incorrect plumbing sizing
 - Electrical outlet placement
 - Exhaust
 - Equipment location

The earlier in the construction process that problems are identified and corrected, the better the process- and the easier it will be for builders to meet deadlines.

What?

- **Mechanical**
 - Duct Layout
 - Diffuser Diagram
 - Exhaust system
- **Electrical**
 - Outlet locations
 - Switch locations
 - Detector location
 - Branch circuits
- **Plumbing**
 - Fixture units
 - Pipe sizing
 - Fixture location

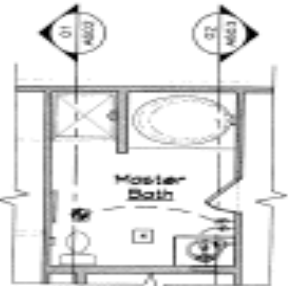
Electrical



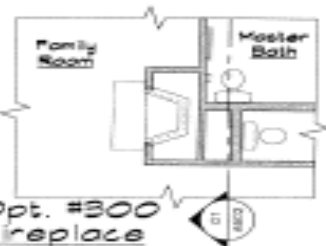
Opt. #205
2nd. Lav. Bowl @ Master Bath



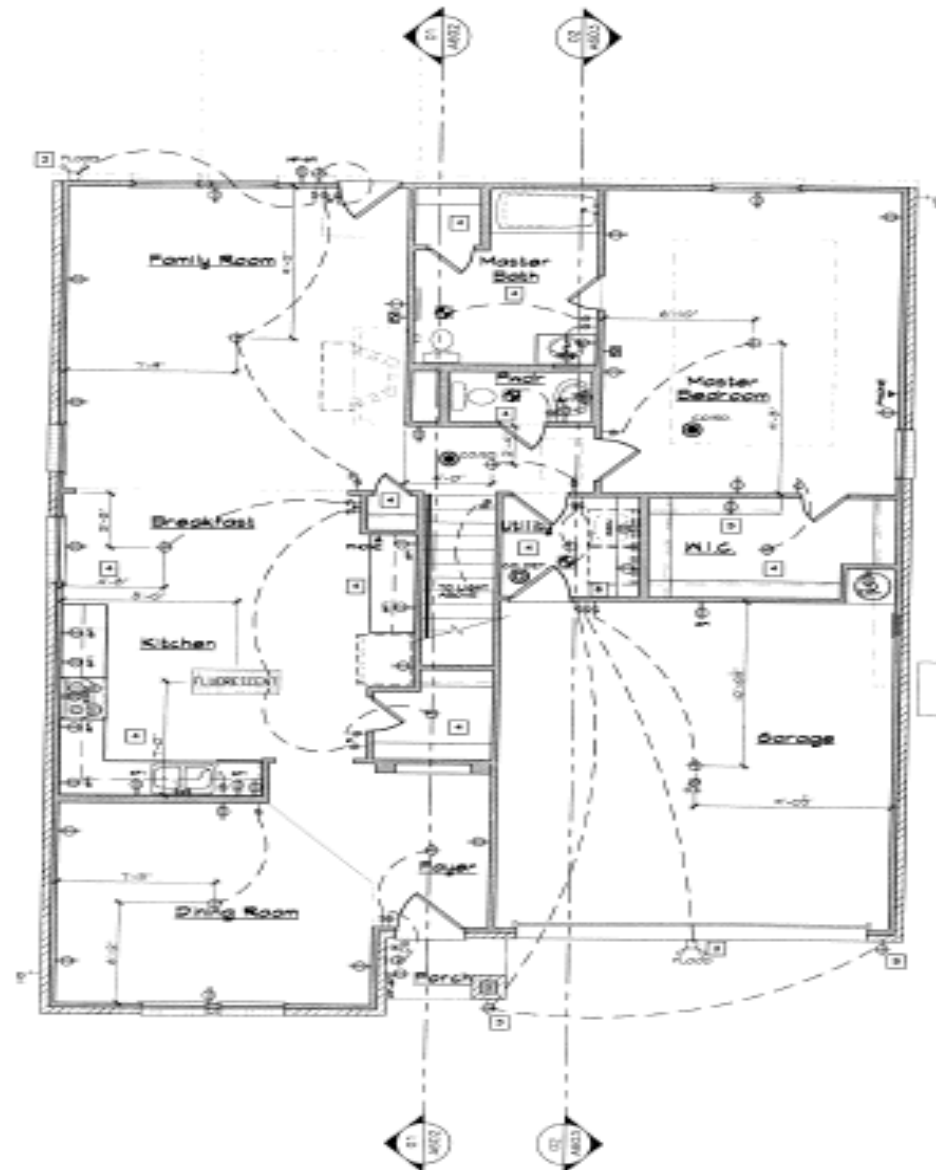
Opt. #201
Garden Tub @ Master Bath



Opt. #204
Garden Tub and Sep.
Shower @ Master



Opt. #300
Fireplace



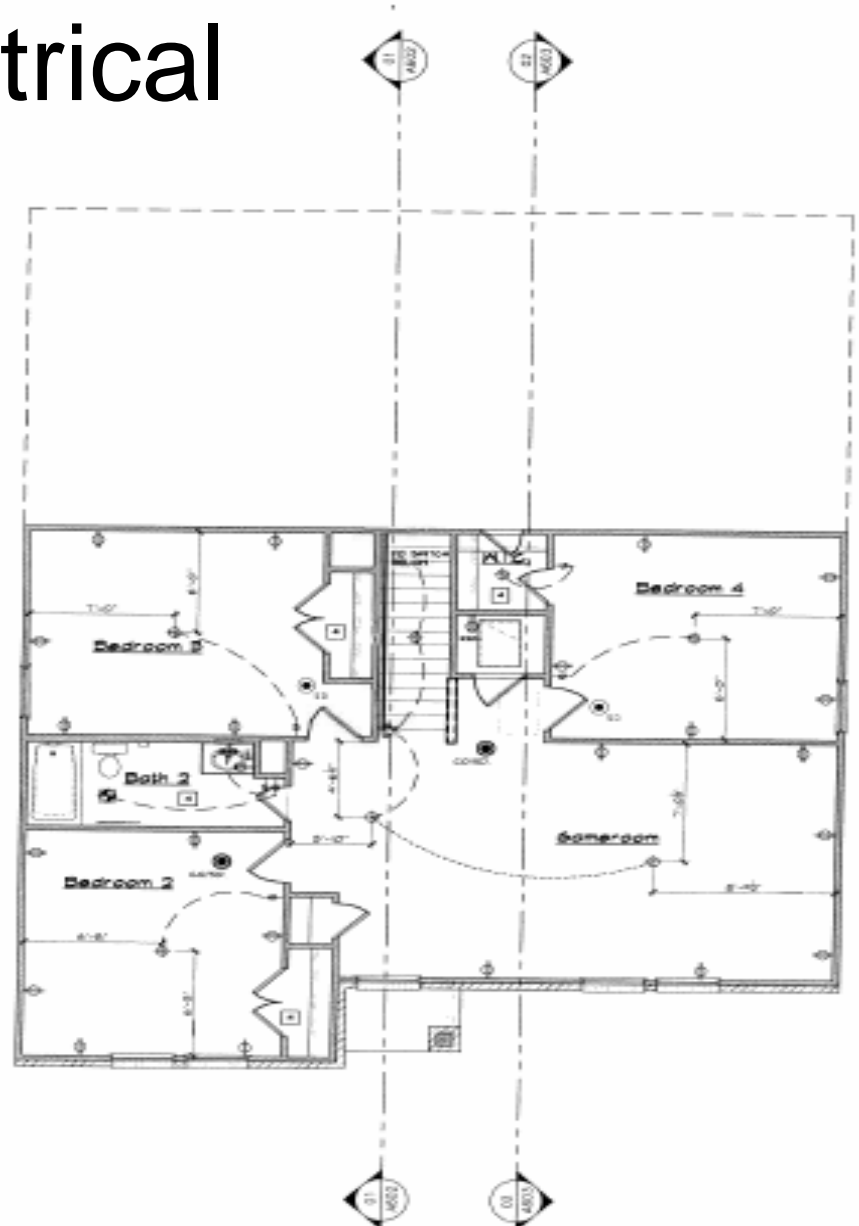
1st Floor Electrical Plan

SCALE: 1/4" = 1'-0" (24" x 36" SHEET)
1/8" = 1'-0" (36" x 48" SHEET)

Electrical

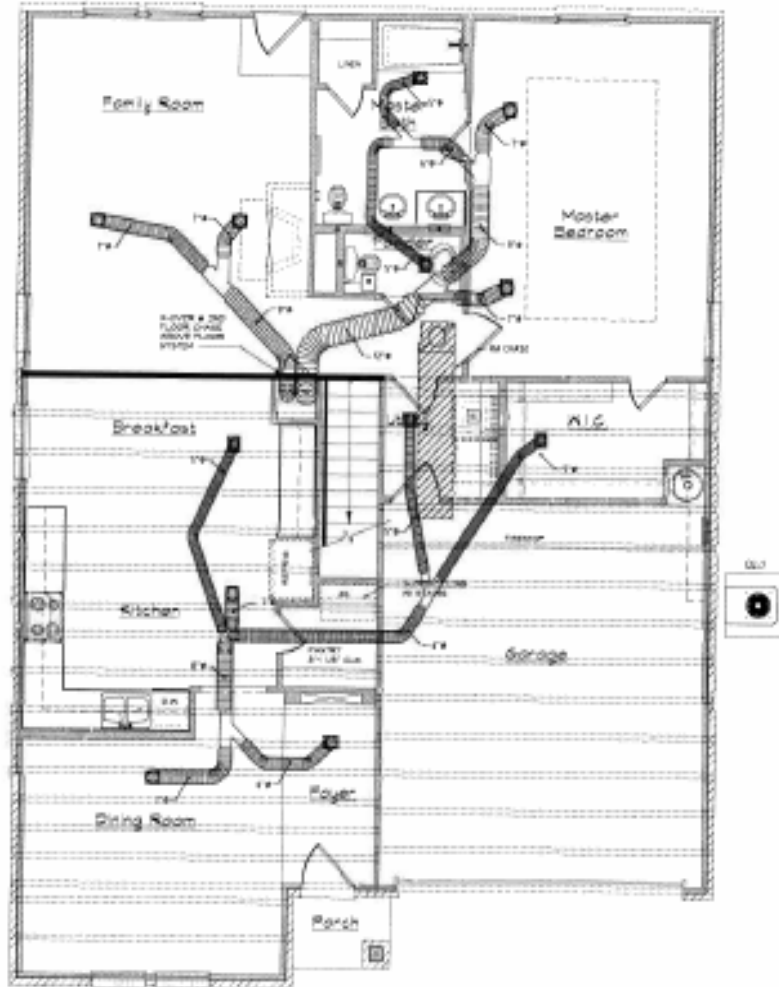


Opt. #206
2nd. Lav. Bowl
@ Bath #2
SCALE: 1/4" = 1'-0" (24" OVER SHEET)
1/8" = 1'-0" (30" OVER SHEET)



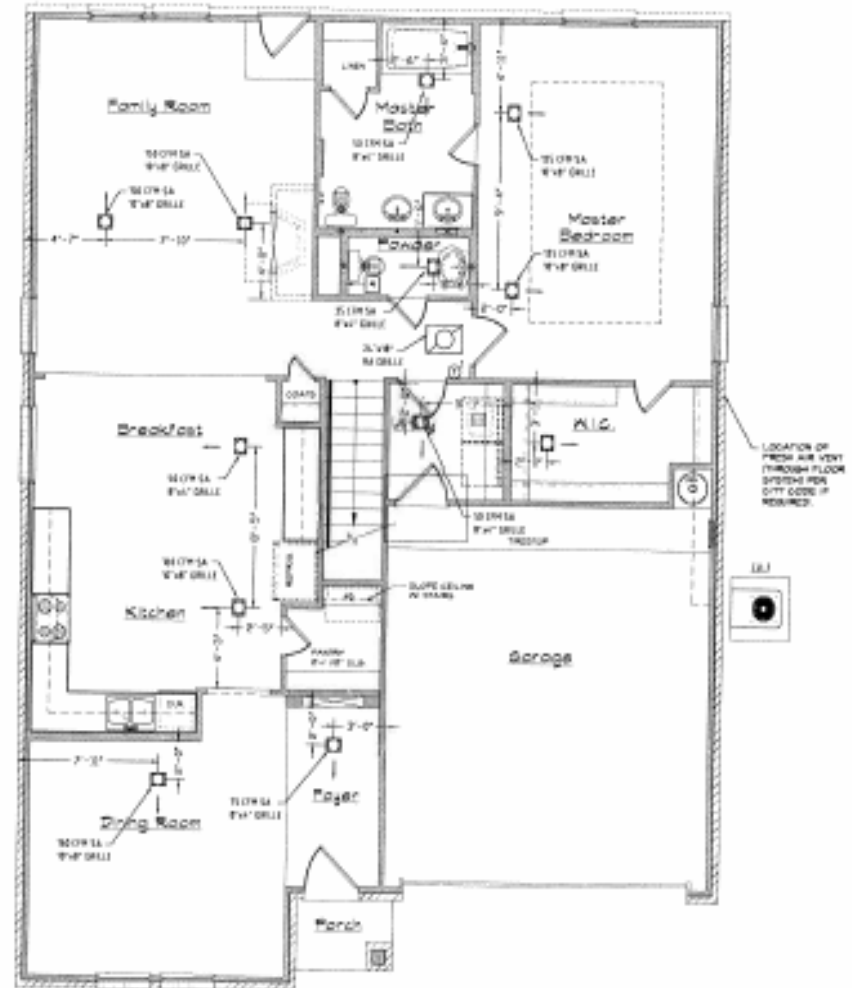
2nd Floor Electrical Plan
SCALE: 1/4" = 1'-0" (24" OVER SHEET)
1/8" = 1'-0" (30" OVER SHEET)

Mechanical



1ST FLOOR DUCT WORK LAYOUT

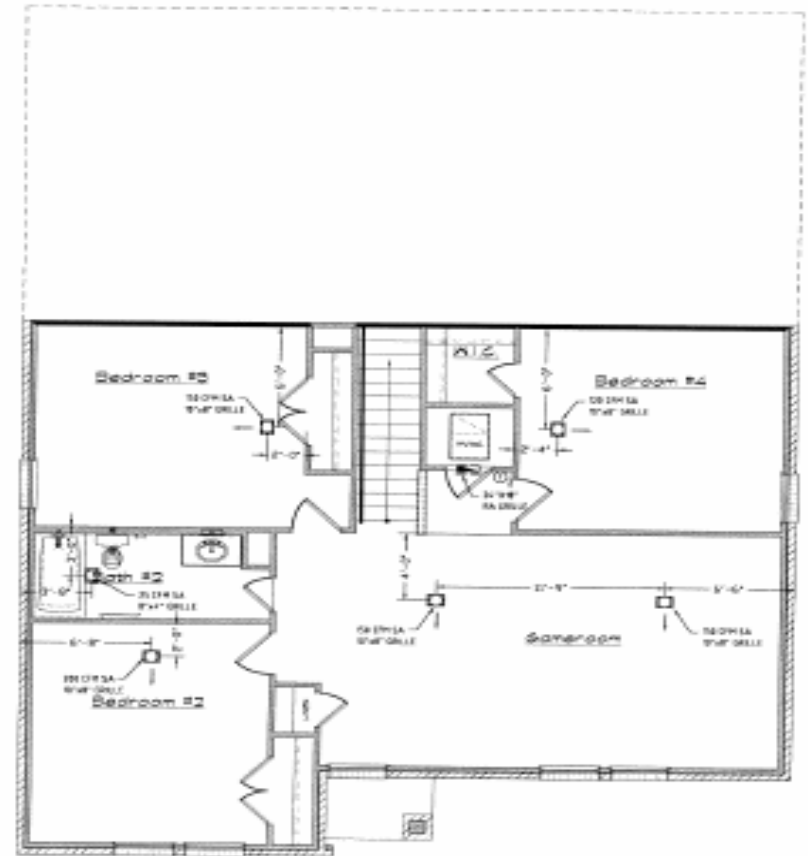
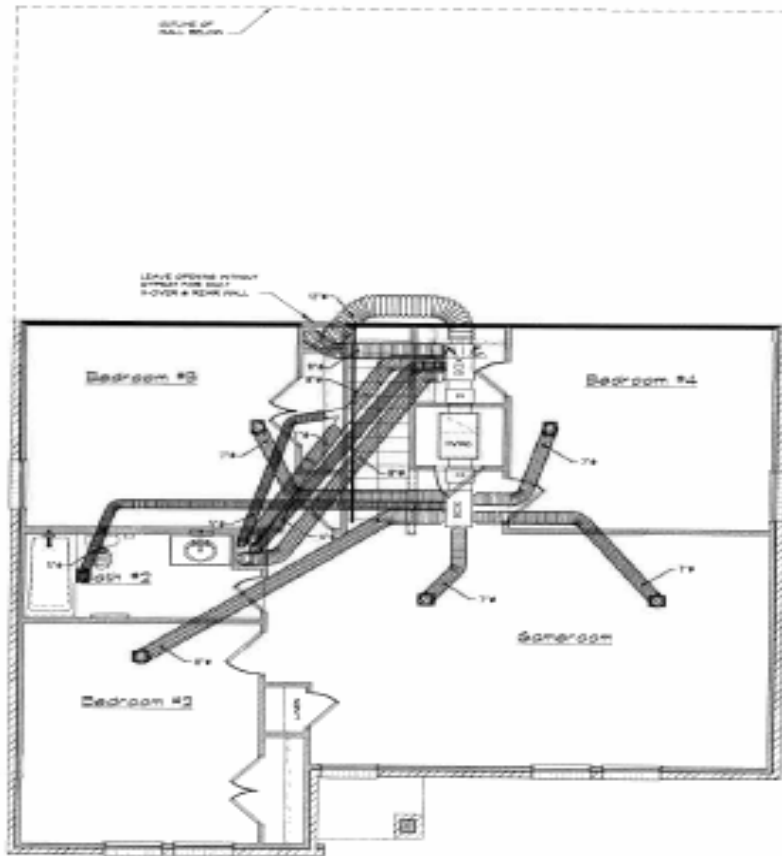
WATER (PUMP 9400)
WATER (PUMP 9400)



1ST FLOOR DIFFUSER LAYOUT

WATER (PUMP 9400)
WATER (PUMP 9400)

Mechanical



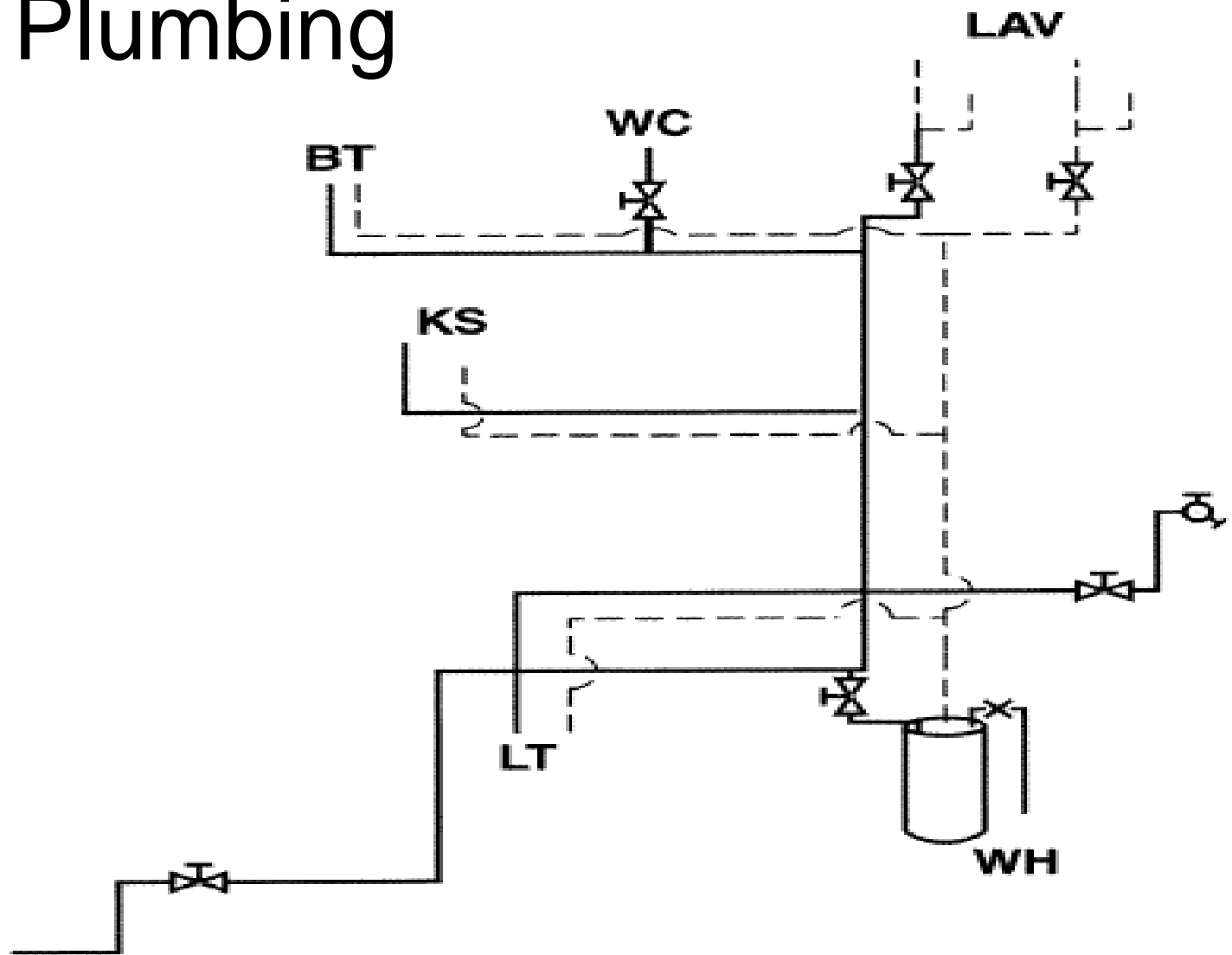
2ND FLOOR DUCT WORK LAYOUT

1/8"=1'-0" (1/4"=6\" SHEET)
1/4"=1'-0" (3/8"=6\" SHEET)

2ND FLOOR DIFFUSER LAYOUT

1/8"=1'-0" (1/4"=6\" SHEET)
1/4"=1'-0" (3/8"=6\" SHEET)

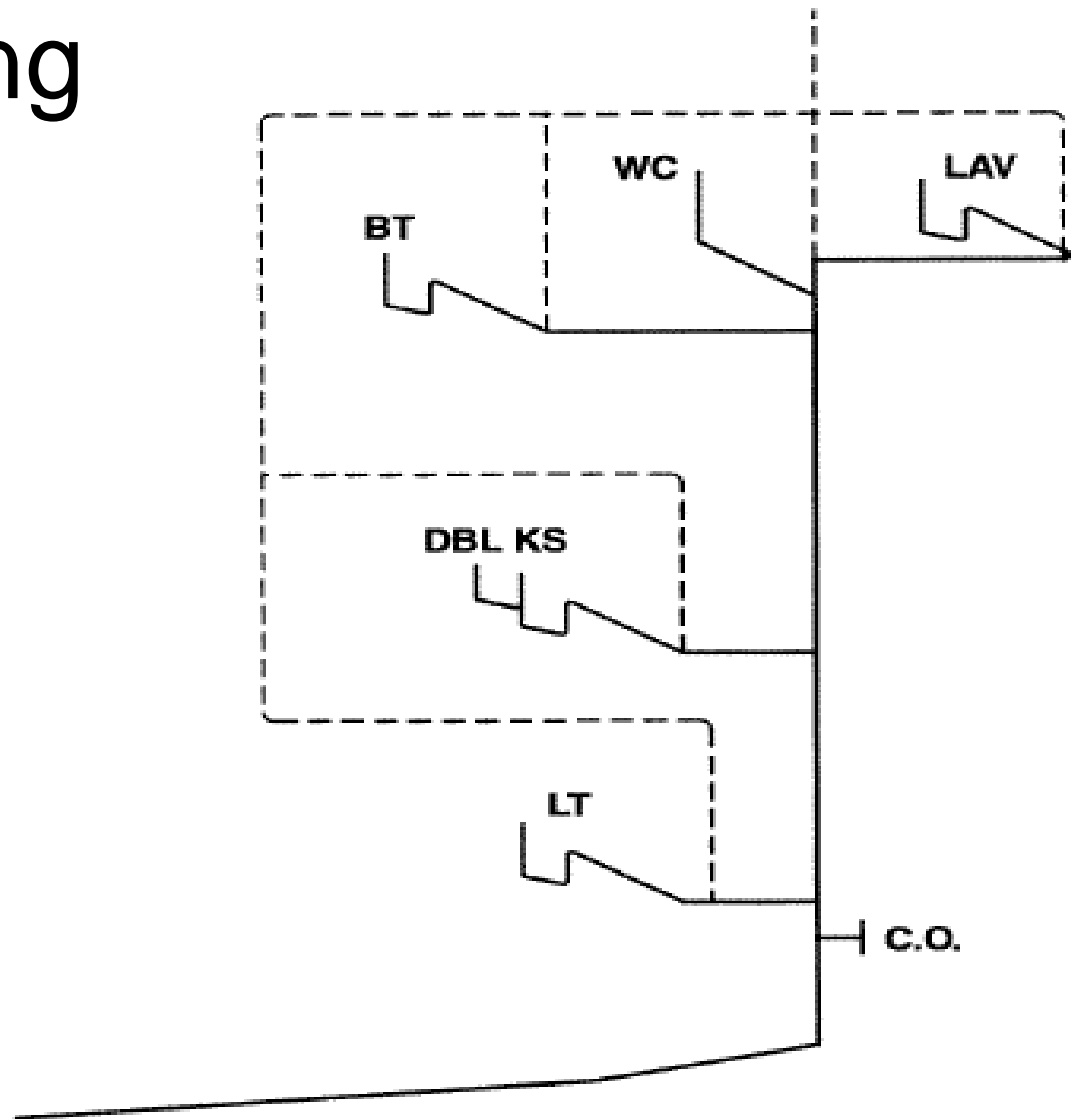
Plumbing



Riser Plan for Water System with Control Valves

Note: This drawing shows a water system with system control valves. It is a flat line drawing of the isometric architectural drawing on this page.

Plumbing



Riser Plan for Drain, Waste and Vent

Note: This drawing shows a DWV Riser of the other illustrations on this page.

FAQ

- ***Do plans have to be engineered?***
 - Usually, no, unless the Texas Engineering Practices Act requires engineering for the structure.
- ***How will this impact turnaround times?***
 - We do not anticipate an increase in plan review processing times. Our goals will remain the same:
 - Residential 3-5 working days
 - Commercial 5-7 working days
- ***Will this change field inspections?***
 - Yes, it should improve them.

Questions or Comments?