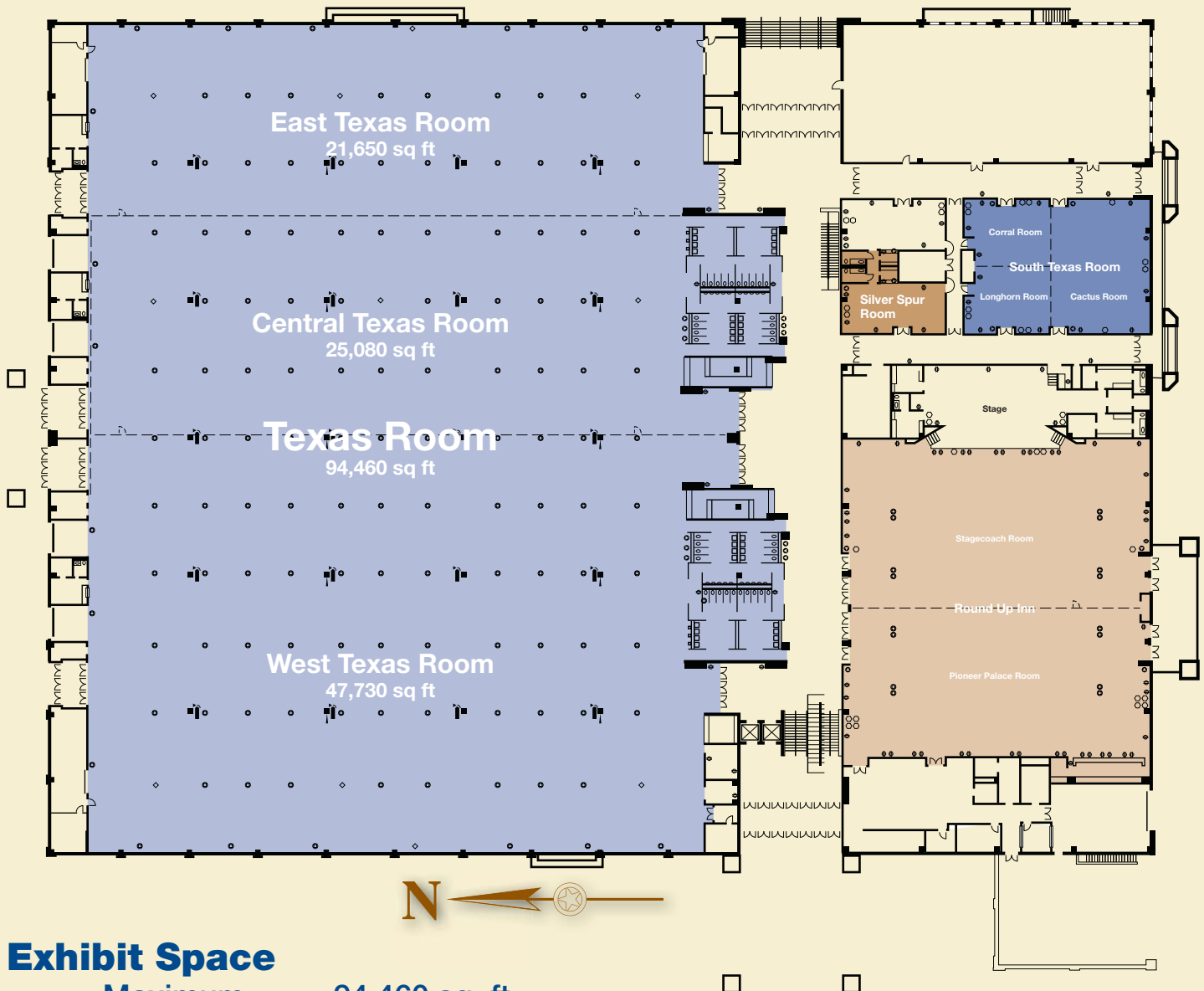


# Amon G. Carter Jr. Exhibits Hall



## Exhibit Space

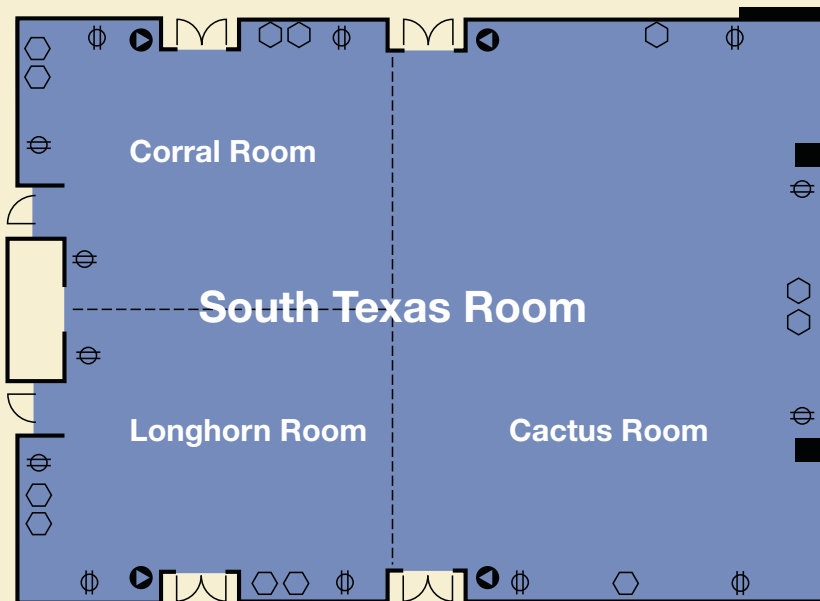
Maximum	94,460 sq. ft.
Minimum	21,650 sq. ft.

## Features

- Lighting—Footcandles providing fluorescent-type illumination at table or desk height
- Climate control—Full central heating and air conditioning
- Restrooms—Eight
- Concession Area—Six permanent

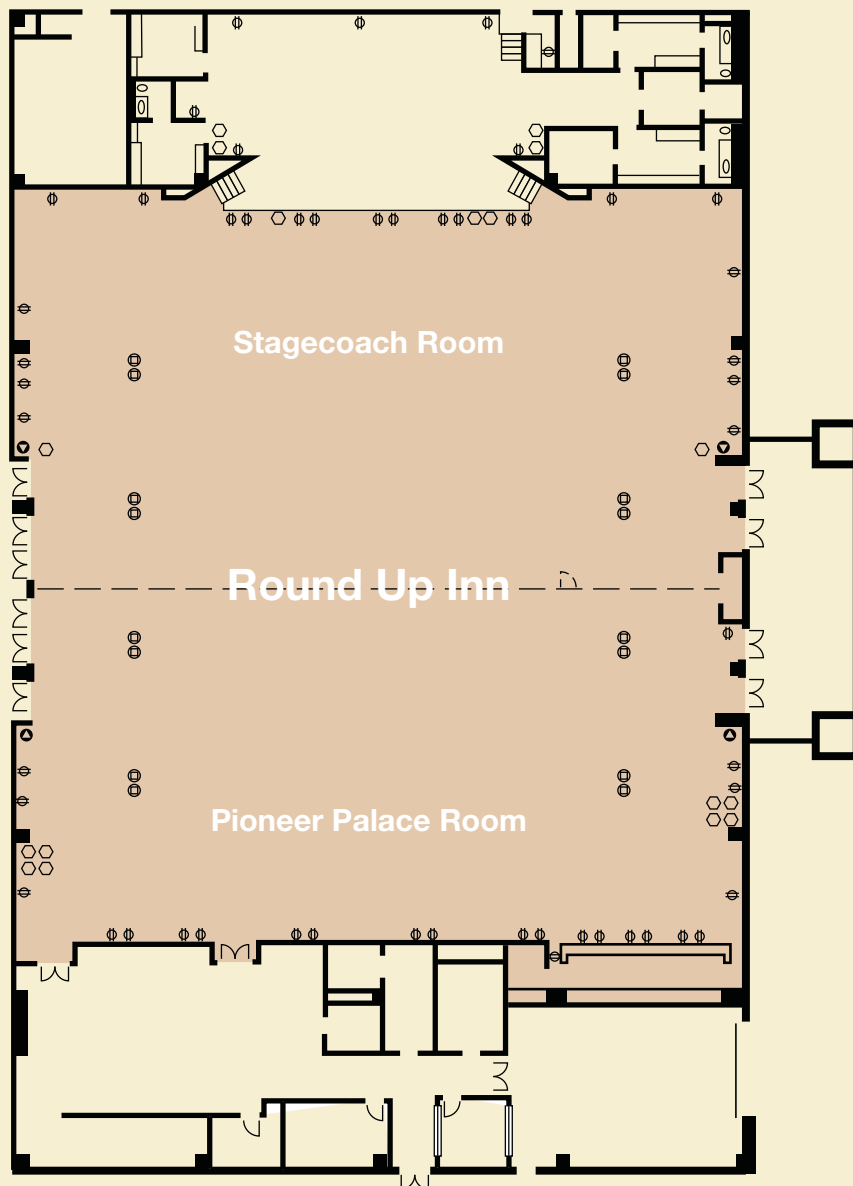
## Utilities

- Electric—Utility boxes located every 30 ft. with four phone jacks in each box. Three-phase power available upon request.
- Water—Outlets spaced conveniently throughout exhibits area, along with numerous floor drains.



- South Texas Room** 4,400 sq. ft.
- Cactus Room** 2,270 sq. ft.
- Corral Room** 1,065 sq. ft.
- Longhorn Room** 1,065 sq. ft.

Key	
⊕	Floor Box Containing: 4 110V Outlets 1 220V Outlet 4 Telephone Jacks
◇	Floor Box Containing: 4 110V Outlets 1 220V Outlet 4 Telephone Jacks 2 Microphone Jacks
⊕	110V Duplex Outlets
⊙	Telephone Jack
○	Microphone Jack
↓	Water Hydrant
■	Column
†	Fire Extinguisher



- Round Up Inn** 18,000 sq. ft.
- Stagecoach Room** 9,500 sq. ft.
- Pioneer Palace Room** 8,500 sq. ft.